

Serving The Nuclear Industry

ThorburnFlex

A Proven Leader In Flexible Piping Technology

Since its conception over 50 years ago, Thorburn has become a world leader in the design and manufacture of precision machined hose assemblies, quick couplings, adapters & swivel joints. Operating under a strategy of global presence in the CANDU Nuclear Industry, Thorburn is structured to consistently meet and exceed customers expectations in quality, value and service.

NGS Installations:

- OPG Pickering (8 Units)
- OPG Darlington (4 Units)
- OPG/BP Bruce (8 Units)
- HQ Gentilly (1 Unit)
- NB Power Point Lepreau (1 Unit)
- Cernavoda Romania (2 Units)
- Quinshan China (2 Units)
- Wolsong South Korea (4 Units)
- Embalse Argentina (1 Unit)

Designers and OEM's:

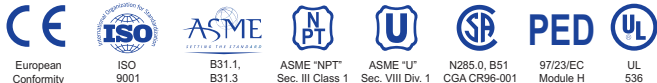
- AECL
- GE Canada
- SNC-Nuclear
- CANDU Energy
- AREVA

Products:

- D₂O primary & auxiliary hose assemblies
- D₂O drum adapter assemblies
- Metallic & rubber hose assemblies for F/M catenary systems
- F/M head fluid quick couplings
- Flexible piping assemblies for ion exchangers
- Water treatment flexible piping assemblies
- Metallic braided hose assemblies for steam service
- Flexible piping & quick couplings for cryogenic systems

Registered Quality Systems:

- CSA N285.0, B51, CAN3 Z299.3
- ASME B31.1, B31.3
- ASME U Stamp
- ASME NCA4000 NQA-1 NPT Stamp (In Progress)
- ISO 9001:2008
- CRN for all Canadian Provinces



ISCIR Romania | CNCAN Romania | EN 13480-2002 | HAF 604 China | TSG China

(CRN for all Canadian Provinces)

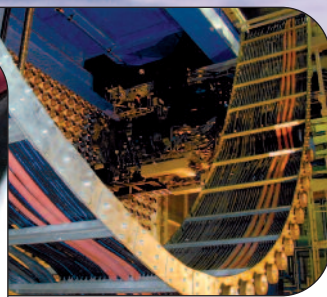
THORBURN FLEX - Canada

165 Oneida, Pointe-Claire, Quebec
Canada, H9R 1A9

Tel: +1-514-695-8710

Fax: +1-514-695-1321

sales@thorburnflex.com



Thorburn hose assemblies on a CANDU catenary system

Custom Metallic & Non-Metallic Hose Assemblies

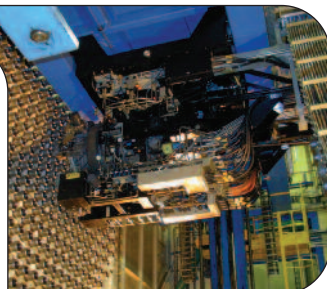
For catenary, fueling machine, D₂O primary & auxiliary service. Registered & designed to ASME/N285.0 Classes 2, 3 & 6.



Thorburn quick couplings on a CANDU fueling machine

NT92 Valved Dry Break Quick Couplings

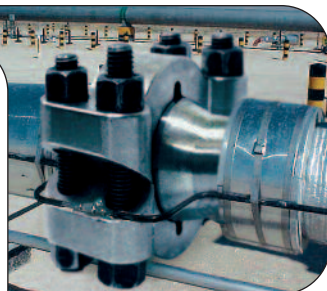
Designed to address the challenges associated with dry break disconnect for D₂O & resin transfer.



Fueling machine with Thorburn quick couplings & hose assemblies

NT71 Dry Break Fueling Machine Quick Couplings

Designed to provide dry break disconnect for F/M service. Registered & designed to ASME/N285.0 Classes 2, 3 & 6.



2500 psi steam piping system with Thorloc 316SS 4 inch connector

THORLOC Pipe Clamp Connector

Sizes up to 4" (DIN 100). Withstands bending, tension & compression loads. Registered and designed to ASME/N285.0 Classes 1, 2, 3 & 6.